



LIGHTINGEUROPE

The Voice of the lighting industry in Europe



2014 ANNUAL REPORT

“The future of lighting is smart and human centric. This will bring new value for all stakeholders: users, buyers, manufacturers and the society at large. Representing the common interests of the industry, LightingEurope has been an excellent and crucial contributor to move this forward.”

–Nils Erkamp, Business Line Manager Lighting,
TNO

4 By the Numbers

5 Projects/Events/
Publications

6 Organizational
Chart

8 Letter from the
Secretary General

9 Financials

10 Looking
Forward

11 Who We Are

Table of Contents



Letter from the President

Reflecting on the last year as President of LightingEurope, there have been many accomplishments and many learnings. We have taken a leadership role in the Commission-sponsored SSL-erate project and sharing the findings on lightingforpeople.eu; we have published expert papers on subjects as diverse as emergency lighting, color quality, and lighting in the smart grid; we have participated in the establishment of the ENEC+ labelling; we have provided industry leadership on the proposed Stage 6 ban on domestic eco halogen lamps – among many other accomplishments.

As the premier organization of its kind, we maintain a strong presence. But that is not enough in this swiftly changing landscape. Change is knocking on our door every day. And we are answering. As we look to the future, we look to grow even stronger, more proactive, and more adaptive—much like the future of lighting. In 2014 we appointed a new Secretary General and underwent an internal re-structuring—and, like the radically changing landscape within which we operate—we are embracing change and the opportunities it presents.

You will see in these pages our success and our view to the future—and you will see it in a better, improved light!

Dietmar Zembrot

Dietmar Zembrot
President, 2012 -2014

70 MEETINGS

TWITTER FOLLOWERS 

243 AND GROWING
(HEY, DON'T FORGET TO FOLLOW US!)

247 CONFERENCE CALLS 

4 FULL-TIME STAFF 
2 PART-TIMERS 

ANALYTICS 

YOU'VE SEEN US IN THE MEDIA: 
LUX MAGAZINE, LUX REVIEW,
LED PROFESSIONAL, LICHT,
LIGHTING PRESS INTERNATIONAL
...TO NAME A FEW

2 INTERNS

LIGHTINGEUROPE MEMBERS REPRESENT:

OVER **1,000** EUROPEAN COMPANIES—A MAJORITY OF WHICH ARE SMES

A TOTAL WORK-FORCE OF OVER **100,000** PEOPLE IN EUROPE

AN ANNUAL TURNOVER ESTIMATED TO EXCEED **20 BILLION €**

MEMBERS **33**

10 WORKING GROUPS

3,503

 **ESPRESSOS CONSUMED**
(FROM OUR FAMOUS MACHINE)

14 POSITION PAPERS AND STATEMENTS PUBLISHED 

24,956
SESSIONS ON OUR WEBSITE

17,914
USERS

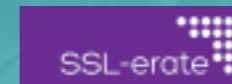
63,278
PAGE VIEWS

Projects

SSL-erate

SSL-erate is a 3-year coordination project, started 1 November 2014, that aims to accelerate the uptake of high-quality Solid State Lighting (SSL) technology in Europe by supporting open innovation and bringing validated information to all relevant stakeholders. SSL-erate is co-funded by the European Commission as part of the Seventh EU Framework Programme for Research and Technological Development under Grant Agreement No. 619249. LightingEurope is proud to be one of the 24 consortium members working on this project. For more information visit: www.lightingforpeople.eu or www.ssl-erate.eu

lightingforpeople 

SSL-erate 

Eco-lighting

The purpose of the Eco-Lighting project is to revise the awarding criteria for light sources set up in the EU Ecolabel Regulation 66/2010 and in the Commission Communication (COM(2008) 400) "Public Procurement for a better Environment". For more information on this project, please visit: www.eco-lighting-project.eu

ECOLIGHTING

Events

Where did you see us in 2014?

- ✦ Light + Building, Frankfurt
- ✦ LuxLive, London
- ✦ Strategies in Light Europe, Munich
- ✦ Smart Lighting Conference, Barcelona
- ✦ ICT Key Enabling Technologies at the Service of European Citizens and Cities, Rome
- ✦ LED Professional Symposium, Bregenz
- ✦ DG Connect/ETSI workshop on Connectivity of Smart Appliances, Brussels and Nice
- ✦ LED Forum, Paris

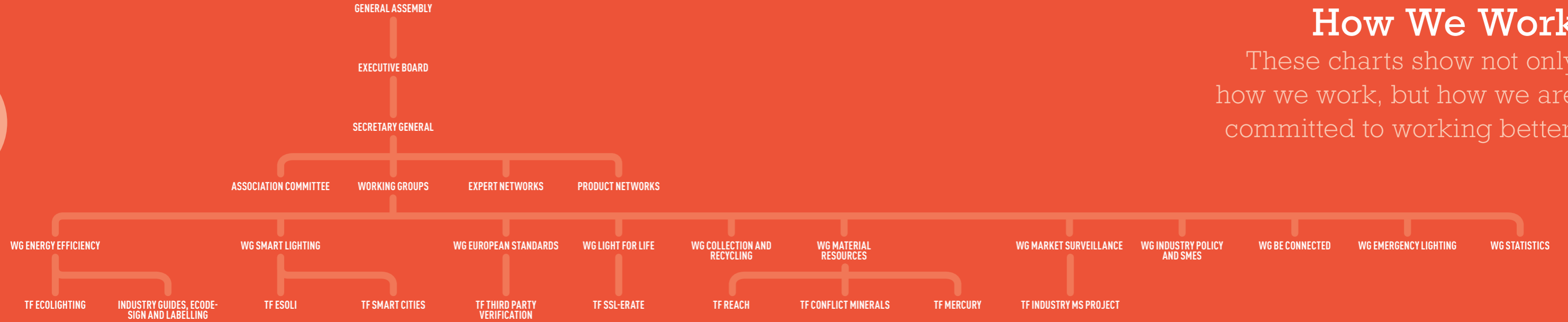
Publications

What did we talk about?*

- ✦ Photo-Luminescent Exit Signs
- ✦ LED Customs Codes
- ✦ ENEC+
- ✦ State of the Art Compatibility
- ✦ Human Centric Lighting
- ✦ Influence of Light Sources on the Public Power Supply System
- ✦ Color Quality
- ✦ Lighting in the Smart Grid
- ✦ Stage 6
- ✦ Revised Labelling Guide

*all available at lightingeurope.org

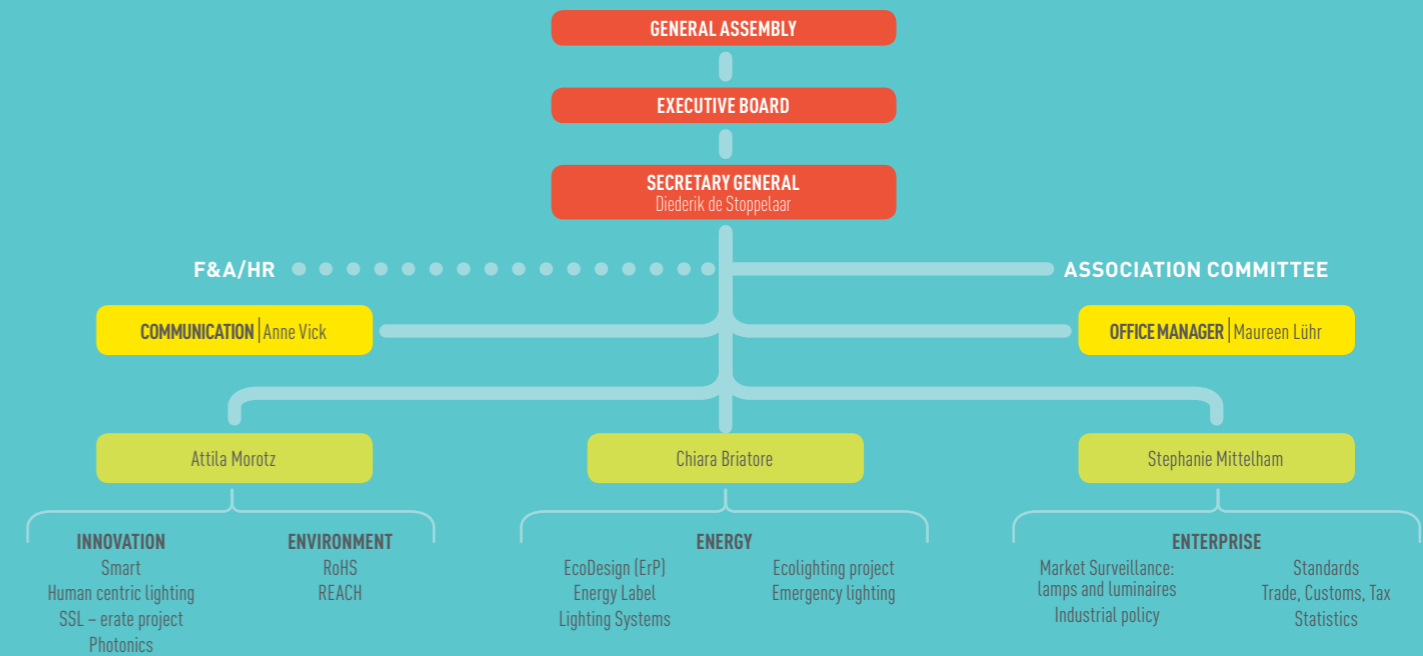
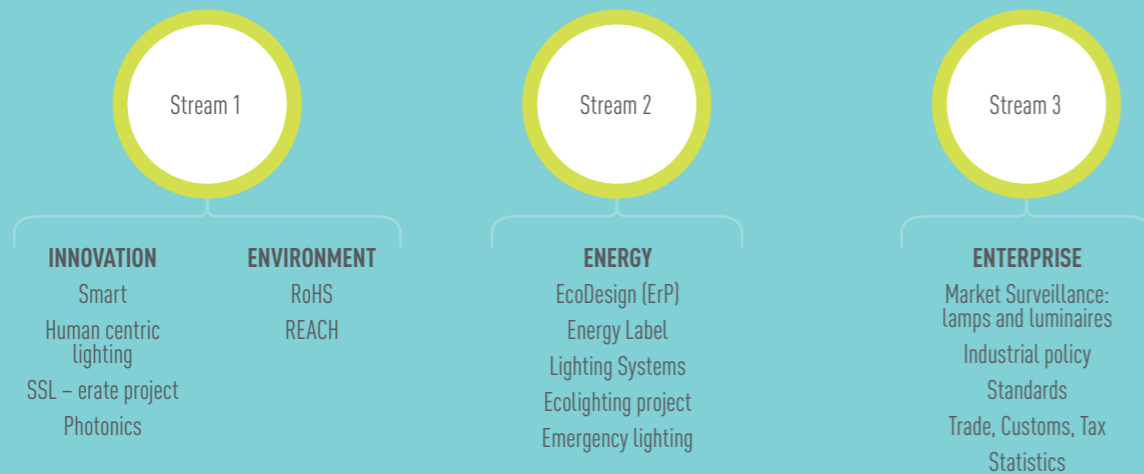
2014



How We Work

These charts show not only how we work, but how we are committed to working better.

2015





Tremendous Forces Demand Tremendous Changes

If you take a moment to compare our 2014 and 2015 organizational charts, it is clear that change is happening. Like the lighting industry itself, we are transforming. As the issues we face change, so must our ways of addressing them. And, with the expertise of our members and Secretariat organized in a more forward-facing, focused, and efficient direction, I am confident in our abilities to deliver the industry leadership necessary to keep Europe in the lead in the world of lighting.

Diederik de Stoppelaar
Secretary General

TEAM



MARC GUIRAUD | Policy Director



CHIARA BRIATORE | Policy Director



STEPHANIE MITTELHAM | Policy Director



ATTILA MOROTZ | Policy Director



MAUREEN LÜHR | Office Manager



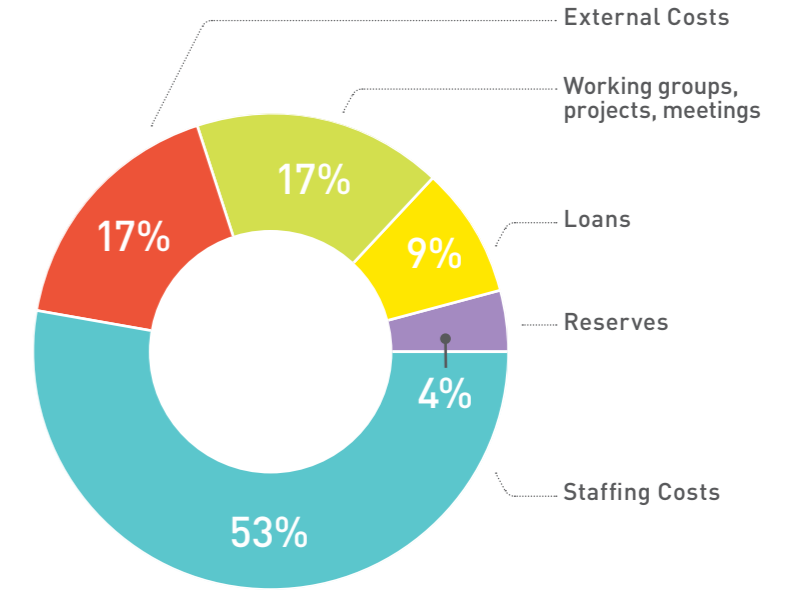
ANNE VICK | Communications Director



JÜRGEN STURM | Former Secretary General

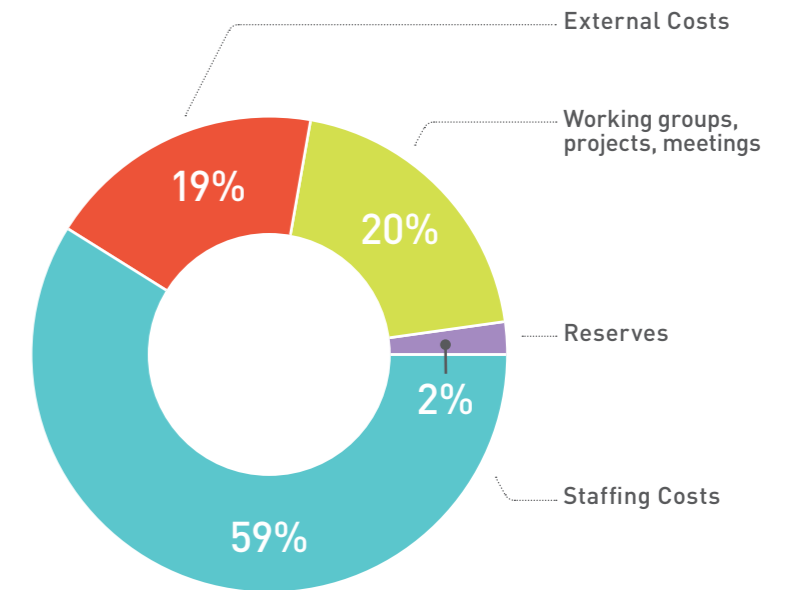
Reality 2014

INCOME	1,382,147 €
Staffing Costs	732,419 €
External Costs	235,498 €
Working groups, projects, meetings	231,052 €
TOTAL	1,198,968 €
Loans	125,420 €
Reserves	57,759 €



Budget 2015

INCOME	1,243,504 €
Staffing Costs	746,052 €
External Costs	230,482 €
Working groups, projects, meetings	245,738 €
TOTAL	1,222,271 €
Reserves	21,233 €



Looking Forward

2015 will be another year of change for the lighting industry. The technological revolution in the industry and the suffering economic climate in Europe will make it a very interesting year for LightingEurope. Let me give a warm welcome to our new Executive Board. There will be many challenges ahead and I appreciate your commitment to support LightingEurope. I would also like to thank and acknowledge our outgoing—and first—President, Dietmar Zembrot, and Executive Board for their dedication and commitment to LightingEurope.

As we move towards the “smart” connectivity of things, lighting will undoubtedly play an important role. And, as our organization has evolved over the past two years, we are prepared to bring leadership and direction into this changing landscape.

I appreciate the confidence that you expressed by electing me as your President and I am very much looking forward to the coming years to make LightingEurope the most influential voice of the Lighting Industry.



Jan Denneman
President, 2015-2017



BOARD MEMBERS 2015-2017



Members 2014

AFLE	NLA
AGID	NMB Minnebea GmbH
AGORIA	NVFN
ANFALUM	OSRAM GmbH
ASSIL	Panasonic Lighting Europe
ASSOLUCE	Philips Lighting
Aura Light	Pol-lighting
Belysningsbranschen	PZPO
BLV Licht-und Vakuumtechnik GmbH	Samsung
Dow Corning	Syndicat de l'Éclairage
FEEI	The Lighting Industry Association
GE Lighting	TOSHIBA Europe GmbH
GIL	Venture Lighting Europe Ltd.
HALLA	Verbatim
Havells Sylvania Europe Ltd.	ZUMTOBEL AG
IGNES	ZVEI
Lighttech	

“LightingEurope represents the best of European industry leadership. The peak body for Europe’s lighting industry consistently tackles complex issues that often have global implications.”

–Bryan Douglas, Secretary General,
Global Lighting Association

Partners 2014

LightingEurope builds bonds and creates solutions through strategic partnerships

Energy Efficiency Industrial Forum

The Coalition for Energy Savings

Global Lighting Association

CEN-CENELEC



LIGHTINGEUROPE
THE VOICE OF THE LIGHTING INDUSTRY

Diamant Building
Boulevard Auguste Reyers 80
1030 Brussels, Belgium
+32 2 706 87 17
www.lightingeuropa.org

